

Thomas Nelson Gearhart Sr.

Jan. 17, 1928 – July 19, 2018

Thomas Nelson Gearhart Sr., age 90, beloved husband, father, grandfather and great-grandfather, passed away peacefully with his loving wife at his side Thursday, July 19, 2018, at Mercy Medical Center in Roseburg, Oregon.

He was born in Wheatland to W. Thomas and Rachel E. (Nelson) Gearhart on Tuesday, Jan. 17, 1928. A child of the Depression Era, he learned from his mother to be both frugal and happy. After high school, he joined the United States Army in September 1946 and served in Japan for 14 months. He married the love of his life, Glyda Lebsack, in Wheat-

land on May 20, 1951. It was easy to see that his every desire was to create a good life for her and the two sons who followed. He would often say "family was the most important thing in life."

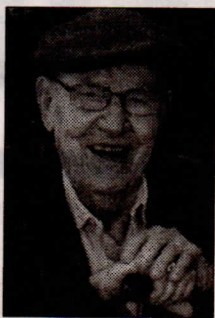
He worked in the retail grocery store trade for most of his life, climbing the ladder to manager very quickly. Tom and Glyda traveled extensively and enjoyed visiting many interesting places near and far. "Work hard, play hard." Then at an age when many men retire, he started a 15-year career as a

clerk at the Adam's County Treasurer's Office until he retired at the age of 80. Retirement did not sit well with Tom, so he went back to work for a time with the Colorado Highway Toll Booths before truly

retiring and moving to Canyonville, Oregon, in 2009.

Tom lived life with a grateful attitude that was contagious.

He is survived by his beautiful wife, Glyda; two sons, Thomas Nelson Gearhart Jr. (Teresa) and William Bret Gearhart (Stephanie); 13 grandchildren and 31 great-grandchildren.



He was a wonderful example and will be greatly missed.

Funeral services will be held Saturday, July 28, 2018, at 11 a.m. at The Church of Jesus Christ of Latter-day Saints, 2956 South Road, Wheatland. There will also be a visitation held Friday evening from 5-8 p.m. at the Gorman Funeral Homes - Platte Chapel, 1108 Ninth St., Wheatland. He will be interred in the Wheatland Cemetery.

The Gorman Funeral Homes - Platte Chapel of Wheatland is in charge of the arrangements.

Condolences may be sent to the family at www.gormanfh.com.