

Betty Coulter

February 16, 1941 – May 5, 2020

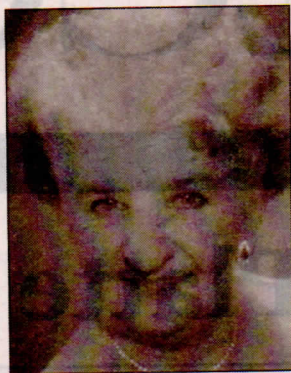
A graveside service for Betty Coulter, 79, will be held at 11 a.m. on Monday, June 29 at the Wheatland Cemetery.

Betty Coulter passed away on Tuesday, May 5 at the Platte County Memorial Hospital.

Betty was born Sunday, Feb. 16, 1941, in Sheridan, the daughter of Ida Mabel (Fischer) and William Elmer Jarrett, Jr.

Betty graduated from Powell High School in 1959. The day after graduation she married Thomas LeRoy Helms. To this union came three children. In 1962, Betty lost both her mother, Ida and husband, Tommy. Betty remarried in June of 1963 to Mahlen "Mike" Coulter. Together they traveled doing construction and settled in Wheatland. The Coulters owned and operated Coulter's Rock Shop until Mike passed away in 1993. Betty was also the co-owner of Variety Artisans Fabrics and Gifts, which is now known as The Quilt Whisperer. Betty lived in a few different towns in Wyoming but when she became ill, she moved back to Chugwater to be closer to family.

Her hobbies included bowling, gardening, and playing cards. Her CB handle was "Lady Jade Runner", referring to her work in Wyomingjade. She was an avid sil-



versmith, seamstress, loved sewing, quilting, and needle tatting. She donated quilts to Project Linus and other charitable causes. She liked being creative and even designed a reusable shopping bag. She loved fishing, enjoyed playing bingo, loved to paint, and knew everything about the Colorado Rockies. She was their #1 fan and no one dared to interrupt her when the Rockies were playing.

Betty is survived by her three children, Earl William Helms of Watkins, Colo., Robin Diane Hitt (Merlin) of Wheatland, and Mary Ann Stinnette (Steven) of Chugwater; sister, Gayle Aylsworth of Caldwell, Idaho; seven grandchildren and fifteen great grandchildren.

She was preceded in death by her parents; first husband, Thomas LeRoy Helms; second husband, Mahlen "Mike" Coulter; and brother, Donald Jarrett in 1970.

Memorials may be made to the Betty Coulter Quilt Donation Fund in care of Platte Valley Bank, 200 Sixteenth Street, Wheatland, WY 82201.

The Gorman Funeral Homes – Platte Chapel of Wheatland are in charge of the arrangements.

Condolences may be sent to the family at www.gormanfh.com